

the

SHEPHERD'S VOICE



13600 CASPIAN WAY, CLERMONT, FLORIDA 34711

FEB 1, 2012

COMING EVENTS

Souper Bowl of Caring

Feb 5

A Trip Down Memory Lane

Feb 12

New Member Sunday

Feb 19

Ash Wednesday

Feb 22

Spring Cleaning Day

Feb 25

Lenten Dinners & Worship Begin

Feb 29

Congregational Meeting

Our annual Congregation Meeting was convened by President, Laura Dilley after worship on January 29.

A three year transition plan was approved with year one being the *Year of Renewal*, year two the *Year of Self-study and Assessment*, and year three the *Year of Call Process*. A new constitution was also approved and needs Synod approval.



Goals for 2012 include rest, renew and reflect spiritually on a personal and corporate level; new constitution and transition plan approval; development of new administrative practices; increase in Synod support; implementation of contract goals; review, organization and archiving of church records in storage; and a 60 anniversary celebration.

Committee reports were approved. A 2012 operating budget of \$285,000 (including \$33,000 for mortgage payment) was approved. The council was authorized to purchase several items: Purchase a new sign and move existing one not to exceed \$10,000, new awning for the play area not to exceed \$3,000, and cable for internet access not to exceed \$7,000.

The name of the *Pastor's Discretionary Fund* was changed to *The Good Shepherd Fund* with a minimum balance of \$500. The name was changed because the church is the source of the money and is consistent with our name and motto.

A motion was made and approved to establish new procedures regarding the use and reporting of Memorial Funds.

Many accomplishments in the past year (including the successful re-financing of the church mortgage) have been documented in the Annual Reports. Copies are available from the church office if you have not yet received one.

Continued on page 2

Congregational Meeting *Continued from page 1*

Donna King, Nanci Etienne, and Diane Fisher were elected to new council terms, while Debby Kiely and Karen Russell were re-elected to new terms.

Laura Dilley, Marie Johnson, and Irving Jones terms have expired and are leaving the council. Jolie Cook and Milan Barabas previously resigned and left the council earlier in the year. Our thanks to these workers and especially to Laura Dilley as she leaves the presidency of the council after a challenging but productive year

In a year with three transitions in pastors, God blessed us with growth and financial stability.

Our New Council Members



Nanci Etienne



Donna King

Diane Fisher not shown



Shel Silverstein (1930-1968) was an American writer, poet, cartoonist and playwright. One of his well known children's books is the "Missing Piece Meets the Big O." The illustrations are simple and the words are few. The meaning of the story, however, is profound.

A wedge-shaped piece sits alone waiting for someone to come along and take it somewhere. Other shaped pieces passed by but were either too square or too round, too big or too small, some cared but soon left, and some had too many missing pieces of their own. The lonely wedge-shaped piece hides from the hungry ones and cries out after the ones that ignore it. It tries to make itself prettier, flashier, and all around more appealing. Nothing seems to work; it is still alone and going nowhere.

Then the Big "O" comes along. This one looked different, completely round and whole, like the letter "O," and wanted nothing from the lonely,

missing piece. The Big "O" encourages the wedge-shaped piece to roll on its own and when it did, it's corners began to round out; eventually it could roll quite well. It caught up to the Big "O" and they rolled along together.

In our contemporary lives today, we often feel like that missing piece. We try everything to meet the standards of the world. We try to fill what is missing from our lives with unimportant, worldly stuff in an effort to be accepted and to belong to someone or something. God has another plan for us when we experience loneliness and a sense of going nowhere. God encourages us to be the best little piece we can be through the gift of salvation in the life, death, and resurrection of Jesus Christ and by the power of God's indwelling Holy Spirit. As Baptized Christians we have the power to roll along on life's journey with our constant companion Jesus. To God we are not missing pieces, we are God's children.

During this coming season of Lent, a time of remembrance, reflection, and repentance, we are on a journey to the cross. Let us remember not to fill ourselves and our time with meaningless activities but with God's Word and love. Let us keep rolling on this Lenten journey with God. We do fit in, are never alone, and we are definitely going somewhere.



Please come to a church potluck on Sunday, February 12th at 11:30 am. Bring your favorite “church covered dish” to share. Bring your memories, too. Council members will be present to meet you and listen to your memories of and thoughts about Shepherd of the Hills Lutheran Church.

Help celebrate our 60 years of heritage by sharing your recollections of the high points and the low points of your life with Shepherd of the Hills.

- What do you remember about our pastors?
- Who was pastor when you came here?
- What is your most favorite moment at Shepherd of the Hills?
- What spiritual epiphanies did you experience here at church?
- What do you wish could have gone better?
- Is there a lesson to be learned from it?

Remember those who do not learn from the past are doomed to repeat their past mistakes. Here is an example from our past: We sold half of the Highway 50 property only 4 years before the church realized they needed more room and ended up building the 1986 sanctuary on the remaining property. This essentially eliminated any additional room to grow. Running out of parking, sanctuary space and Sunday School space eventually forced our move to a new

location. If we had not sold the rest of the Highway 50 property, the church might have been able to remain in the same location and still have the use of previous buildings. Lesson for the future: selling land adjacent to our church may limit church growth in the future...maybe not our future...might be our children's future.

- What memory tells you how far we have come? Diane Fisher recently shared a memory. In the 1970s, she was a Sunday School teacher. There were only 5 children in Sunday School and 3 of them were hers. Is the church where you thought we would be 10 years after we moved into this new building?
- What are your memories of this past decade that should go down in the history of Shepherd of the Hills? Answer this question and help us update our church history between the 50th and the 60th year [2002-2012].
- How has Shepherd of the Hills been a blessing to you? How have you been a blessing to Shepherd of the Hills? How has Shepherd of the Hills been able to bless others... locally....regionally....globally?

Please join in the fun as we Walk Down Memory Lane together... come and share your memories of Shepherd of the Hills and bring that favorite covered dish! Also bring any old pictures, clippings, or church-related items that may help document our history.





Spring Cleaning

Feb 25

9 am - 12 noon

All volunteers welcome!

Target: Sacristy, Outside Storage Room, Kitchen, Administration wing

Additional Dates scheduled if needed

Note: If you want to keep something that is stored in these areas please call the office to pass on this info to the Virginia circle.

You never know what might get tossed unless claimed!

Church Office
Hours
Monday-Friday
8 a.m. to 1 p.m.
Closed holidays

Office phone :
352-394-3382

Emergency phone:
352-682-6838

shephillsclermont.org

Worship & Music Team Holds First Meeting

The newly formed Worship and Music Team held their organizational meeting on January 19. The purpose of the group is to begin an intentional, organized effort to enhance the present worship experiences, engage all participants in praising God, and evolve to new levels of worship and music experiences at SOTH -- by Enhancing, Engaging, and Evolving.



Heather Faraci (involving youth), Ruth Monzillo (volunteer worship support), Larry Holihan (Powerpoint, contemporary worship), Ed Frame (music director), David Wallin (special services support), and Pastor Nancy (worship leader) are on the team. The new council liaison for worship and music (yet unannounced) will also serve on the team.

Topics at the first meeting included Lent and Easter schedules, unfamiliar hymns, choir concerns, resources for worship, support schedules, contemporary worship and other items.

As you can see, we have a full plate. If you have any suggestions or concerns about worship, please contact any member of the team.



One of the topics discussed at the worship and music meeting was the lack of members subscribing for altar flowers. A sign-up sheet is available in the back of the church. Members can sponsor flowers for \$35 in honor or memory of loved ones, special events or just in honor of God.



Lent & Holy Week 2012

Ash Wednesday:

February 22, 2012 --12 Noon and 7 PM

We begin our Lenten journey with a traditional, Lutheran Liturgical worship setting on Ash Wednesday. Both services will include Holy Communion and the imposition of ashes. *"Remember that you are dust and to dust you shall return."* The first of six Lenten Dramas will begin at this service.

Mid-Week Lenten Services

Wednesdays, February 29, March 7, 14, 21, 28, 2012 at 7 PM

Each Wednesday in Lent we will have a Lenten worship service at 7 PM. This year we will hear presentations by some very unusual eyewitnesses to the crucifixion. Telling their story is the despised Thorn (Ash Wednesday), the rumpled Robe, the hard Nail, the military Spear, the burial Shroud and the huge Stone. The musical setting is Holden Evening Prayer.

Palm Sunday

April 1, 2012 at 8 AM and 10:15 AM

Hosanna in the highest! Today we celebrate Palm Sunday with a traditional Lutheran liturgy, music, Holy Communion, hymns, the waving of palms and the reading of The Passion from the Gospel of Mark. Both services are identical in format.

Maundy (Holy) Thursday

April 5, 2012 at 7:30 PM

The Maundy Thursday traditional liturgy includes dramatic readings, Holy Communion, the stripping of the altar and a silent recessional.

Good Friday Service of Tenebrae

April 6, 2012 at 7:30 PM

This is a traditional service of "Shadow and Darkness" as we recall our Lord's betrayal, abandonment, trial, and crucifixion.

Easter Morning Worship

April 8, 2012 at 8 AM and 10:15 AM

We celebrate the Resurrection of our Lord through traditional liturgy, special choir music, Holy Communion, prayer and the sharing of the Word. Join us and sing praise to our God! Both services are identical in format.

Special Activities:

- *Wednesday Mid-week: A pot luck dinner at 6 PM precedes each mid-week service from February 29 through March 28, 2012.*
- *Palm Sunday April 1, 2012: Youth Easter Egg Hunt between services, 9:15-10 AM*
- *Easter Sunday April 8, 2012: A Brunch is served between services*

New Member Class

Register Today! Considering joining the faith community at Shepherd of the Hills Lutheran Church? Then these classes are for you! Join us during the Sunday School hour (9-10AM) each Sunday for 6 sessions beginning Sunday, March 18, 2012. We will talk about what it means to be a Lutheran Christian in today's world, get to know each other, and learn about the ministries and activities at Shepherd of the Hills. Those desiring to join will be received into membership during worship on Sunday, May 20, 2012. Please contact the church office at 352-394-3382 to reserve your spot!



First Communion for children ages 6 through 10. Coming soon in February 2012. Watch for date and time.

COMING
NEXT MONTH

WOMEN'S
CONFERENCE
March 3

LENT DINNER
& WORSHIP
Mar 7, 14, 21, 28

RIVER RAT
RAMBLE
Mar 2-3

Why did First
Lutheran Church
change our name
to Shepherd of
the Hills?

SHEPHERD OF THE HILLS BLESSES QUILTS

On January 29, 2012, Pastor Nancy C. Vogel blessed the LWR Mission Quilts made by our Quilting Circle before the quilts are taken to the collection point for distribution later in the week. 172 LWR Mission Quilts were sewed with Christian love by Shepherd of the Hills. Donations to the Quilting Circle to offset the cost of batting came close to meeting the cost of supplies in 2011.



LWR Quilts, stitched in love, bring joy and warmth to those who receive them. They also represent a powerful connection between U.S. Lutherans and those in need around the world. With the products of our needles and thread, Shepherd of the Hills reaches out to those in the greatest need and wraps them in comfort. We show them that they are not alone. By the simple act of stitching a Mission Quilt, we can touch lives, inspire hope and create change by providing a tangible reminder that those in need have not been forgotten.



www.flwelca.com

The Purpose Statement for the Women of the ELCA: *As a community of women created in*

the image of God, called to discipleship in Jesus Christ and empowered by the Holy Spirit we commit ourselves to grow in faith, affirm our gifts, support one another in our callings, engage in ministry and action and promote healing and wholeness in the church, the society, and the world.

You may be asking, "What is WELCA and why should I get involved?" Women of the Evangelical Lutheran Church in America is a women's group that is much more than the ladies staked out in the kitchen or the organizers of annual church quilt drives or a monthly coffee clutch.

In the Florida-Bahamas Synod we can be proud that our Women of the ELCA members are

involved at unprecedented levels beyond what their foremothers envisioned before them. We are a diverse group of mothers, grandmothers, sisters and daughters that have found a common purpose in serving within and beyond our church walls.

SWO is the Florida-Bahamas Synodical Women's Organization; all women are encouraged to become more involved in the fellowship of the Women of the ELCA by joining SWO. SWO coordinates synod-wide events and promotes communication between church wide, conferences, and local congregational units. They sponsor uplifting and renewing FALL GATHERINGS, come together at conference events especially at SPRING GATHERINGS, and delight in sharing ministry as well as themselves.

Shepherd of the Hills is co-hosting, with Zion Lutheran Church, the SPRING GATHERINGS 2012 at our church. Some information about this gathering is shown below and more will be coming in the next few weeks. Michelle Candage is the coordinator for this event. Please contact her for more information.

Women's Spring Gathering at Shep Hills

All Heart of Florida Conference women are invited to attend the Spring Gathering at Shepherd of the Hills Lutheran Church, Clermont, on Saturday, March 3rd. The event is from 9:00 - 2:00 pm. There will be the short business meeting, bible study, lunch and entertainment. Additional information will be forthcoming. Do plan to attend!



How Do Mardi Gras, Fat Tuesday, and Shrove Tuesday Relate to Lent?

SHROVE TUESDAY, MARDI GRAS, and FAT TUESDAY

They are part of the 3 days immediately preceding Ash Wednesday.

The old English word 'shrove' means to repent.

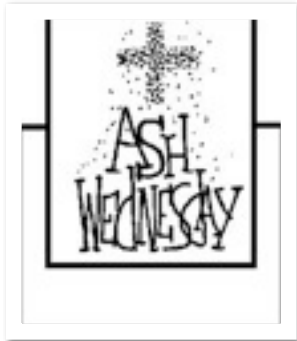


Mardi Gras is French and translates as 'Fat Tuesday'

indicating feasting before the traditional days of fasting for Lent.



ASH WEDNESDAY



The first day of Lent is Ash Wednesday. In ancient times, ashes on a person's head indicated a sign of humility before God. The ashes symbolize the sadness and sorrow of sin being brought into the

world and the death of Jesus on the Cross. The ashes remind the believer of the consequences associated with sin. This is a special day of reflection on our lives and what we need to change in our lives so we are living as Christians.

Early in the church, ashes were only used to mark those who made public confession of sin and sought restoration to the church family at Easter. Over time this practice changed to include the imposition of ashes to the entire congregation. The mark of the Ash Cross on the forehead symbolizes our repentance of our sins.

Ash Wednesday services for Shepherd of the Hills are on February 22, 2012 at noon, and 7:00 pm.

LENT

Lent is a journey of prayer and preparation culminating in the celebration of Easter. It is a time to examine ourselves in the light of Christ, to repent of our sins and to remind ourselves of God's Grace. Historically, fasting or 'giving something up for Lent' have been used as ways to remind us of the need for penitence.



The Lenten season began during the church's 4th century after Christ came to Earth. It runs from Ash Wednesday. Continues through Holy Week with Palm Sunday, Maundy Thursday and Good Friday and culminates with the celebration of the resurrection of Jesus on Easter.

Your Thrivent Choice Dollars

Based upon recommendations made by Thrivent members at their meeting in December 2011, the Church Council voted to approve spending Thrivent Choice Dollars up to the amount of what is listed in the financial reports as of January 12, 2012 [just over \$3,000].



The money will be spent as follows: items are listed in order of priority with the highest priority item listed first.

\$1,000	Pastor Discretionary Fund	Dee Shields/Pastor Nancy
?	Bibles for those Confirmed May 2012	Bert Tunila
?	Repair of Baptismal Font water damage	Dwayne Dundore
?	Display stand/s for flowers near altar	Susan Sherman
Remaining amount	Scholarship Fund	Dee Shields



The individual/s named next to each item is/are the council member/s responsible for making the purchase or distribution of the item. If you would like to be a part of this process, please contact the council member for the item you are interested in working with.

Thank you Thrivent members!

Confirmation Camp

Our SOTH confirmands attended confirmation camp at Luther Springs in Hawthorne, Florida the weekend of January 13th. The topic of the camp was the Lord's Prayer. The kids enjoyed devotions, games and outdoor activities. The camp sits on 38 acres and is beautiful and serene. The kids (and chaperone) had a great time meeting ELCA Lutherans from around the state of Florida.



(See some more pictures of camp on our picture page.)

No Computer?

Don't have a computer to receive this newsletter electronically?

Call the church office and let them know you would like one mailed to you!

Neighborhood Center has Productive Year

FAITHneighborhoodcenter



- The volunteers collectively devoted 7,720 hours of work at the Center.
- The Center provided support to 8,796 families in 2011 - a total of 31,380 individuals.
- Of these, 24,581 received food.
- We distributed over 153,000 pounds of food.
- 287 families received support with utility bills.
- Six individuals won scholarships to attend academic and vocational schools.
- The scholarship funding was obtained through a spring luncheon.
- At Christmas time the Center hosted several events:
- The adult party was attended by 250 families.
- The children's toy party provided toys and gifts to 1243 children.
- Our float in the Clermont Christmas parade was a hit.
- We gave out dinner baskets to about 350 families.
- The fall golf tourney set a record with 124 golfers and raised a record amount of funds to support the Center.
- With help from TV Channel 13, we were able to obtain a used van for a client family that was in great need.
- The community was generous in supporting the Center and we were able to finish the year in the black.
- These are a few of the highlights and accomplishments for 2011. I can't tell you how proud I am of all the volunteers. Without you, we couldn't open the doors. Thanks for all you do.

-- Jerry Colyer, Executive Director

MISSION|INSITE

Do you love computer work and working with data? Then here is a task for you! Help SOTH gather INSITE (data) on it's membership and the community using a free service provided by the Florida Bahamas Synod.

Since this is a new area of ministry, you get to help define the job description! See Pastor Nancy if you are willing to dive in! This is one of the most important pieces in the transition plan. Without this information, progress leading to calling a new pastor is essentially halted.

New Welcome Center

Have you noticed materials are being rearranged in the back of the church? Watch for further developments.



Know our Members

By Donna King



Dorothy Derrick

One of the very busy and energetic members of our congregation is Dorothy Derrick. Born and raised in the Chicago area, she was one of six

daughters. Having all those girls didn't wear her mother out, as she is now 91 and still living in her own home. Maybe that's where Dorothy gets her stamina.

Dorothy married Warren Derrick and they had two daughters, Gwen and Carolyn. Gwen and her husband, Mike Pertell, and their son Joseph live in Clermont and are members at Shepherd of the Hills. Carolyn and her husband Shawn Hand live in the Chicago area with their son Jeremy and daughter Madison, but they were married at Shepherd of the Hills by Pastor Jon.

Dorothy had a career as a junior high school teacher for special education. After she and Warren retired, they moved to Florida in 2002 and settled in Leesburg at the Royal Highlands community. They joined the Shepherd of the Hills church in 2003.

Having traveled extensively, Dorothy has been to forty-two of the fifty United States, and several continents. Her experiences include an African safari, riding on an elephant, rafting in Thailand, walking the Great Wall of China, as well as escapades in Japan and Europe. She and her husband have now become fond of cruising and plan a trip to the Panama Canal in April,

and an Eastern Caribbean cruise with daughter Gwen and grandson Joey in July.

At Shepherd of the Hills, Dorothy keeps busy leading the quilting efforts and the "little dresses" project. She loves to sew and does a lot of the quilting work at home. Also, she makes costumes for church events, like the Christmas pageant, and she participates in making the "me dolls". At the late church service on Sunday, she often stands up during the Announcements and gives information on the schedule for crafts. She also participates in the Virginia Circle.

Other activities that keep Dorothy busy outside of the church include being a member of the DAR (Daughters of the American Revolution), for which she has served as an officer. She recently instituted a "coupons for the military" project in that group. Dorothy also plays bridge regularly. In addition, she is the emcee of a local Kitchen Band that tours the nursing homes and assisted living facilities in the area entertaining the residents. One of the things she says that she doesn't do is cook. Her husband Warren handles those duties at their house.

Dorothy attends Sunday services regularly at Shepherd of the Hills and says that she loves the church because the people are so friendly. The church is fortunate to have her and her skills to further our mission of "Blessed to be a Blessing".

[Council Minutes are available in Member's Blog on Website. Use username of shephillsclermt and password Btbab1 to enter the blog.](#)



1972-1982 THE THIRD DECADE, THE NATIONAL BICENTENNIAL CELEBRATION & OUR 25TH ANNIVERSARY



In celebration of the forthcoming national bicentennial, a Garden of Flags from all 50 states and a fountain in the shape of a cross were

dedicated on April 7, 1974. Flags from the National American Revolution Bicentennial Administration, our Lutheran Church Flag, and the American flag also were flown. Flags were flown every Sunday and church members carried the flags during parades in Clermont. The White House in Washington sent a letter congratulating our church on this special patriotic endeavor.

By the 25th Anniversary in 1976, the congregation had more than tripled. The congregation consisted of 126 baptized and 108 confirmed members. Winter Visitors swelled church numbers on a regular basis. The total budget was \$18,278. The 25th Anniversary celebration was held on Reformation Day October 31, 1976. The anniversary date was calculated from the date of the very first worship service.

In the 25th anniversary year, one worship service and Sunday School classes were held every Sunday. Because the church continued to share a

part-time pastor with Zion Lutheran in Groveland, seasonal and festival worship services were alternated between the Clermont and Groveland location. Only 4 original charter members now remained in the congregation—Mrs. Erna De Neve, Leroy Luvalol, Albert Nolze, and Arthur Strey.

As part of the silver anniversary celebration, the church organized a special anniversary fund drive “Celebrative Giving” and raised \$2,500 between May 1 and October 15 to present to the Florida Synod for new missions established in Florida. This endeavor was the congregation’s way of expressing thanks to the Lord and His church for the blessings enjoyed over the past 25 years. This thank-offering was presented to Dr. Yount on the day of the anniversary celebration, October 31, 1976.



“Hitherto hath the Lord blessed us” was the concept that became the underlying strength and identity of the congregation of First Lutheran as it planned for the future during this silver anniversary banner year. First Lutheran congregation was mindful of and gave thanks for the abundant blessings of Almighty God, that have enabled us and sustained the onward march of His church for 25 years.

Continued on page 11

Laura Dille is the chairperson of our 60th Anniversary celebration to be held at Reformation in 2012. She is submitting a series of articles on the history of our church in preparation for this event.

Continued from page 10



Bursting at the seams, at the seams, two of the 25th Anniversary five year goals were to have a resident full-time pastor and begin a building fund. Church growth continued from 1978 through 1981. In 1979, the Church Council was

authorized to sell almost half of the Highway 50 property with the funds directed to go toward remodeling and refurbishing the church home.

In May 1980 a document to lay out the rationale to appeal for the collection of money for a new building was written. The First Lutheran Church Appeal for Funds to Expand, Improve and Enhance Church Facilities stated that, "The people who founded this church had a vision and knew a felt need and they sacrificed their time and substance to enable the formation and establishment of the Church. They were concerned not only for themselves but for those who would come after them." In the previous 27 years of church history there had been no prior appeal for major gifts authorized or undertaken. The 1969 addition was enabled by the gifts of several major donors. The Appeal Document goes on to state "We are indebted to the past and have the responsibility for "BUILDING UP THE CHURCH" and enabling the fulfillment of its mission now and in the future.

On January 25, 1981, the congregation voted to separate from



Pastor George Becker

Zion Lutheran and called the Rev. George Becker as a full time pastor. On April 1, 1982, the Board of Missions approved a pastor salary aid grant for 3 years. Upon separation, then church had 102 members [92 adults and 11 children] with a 1981 budget of \$25, 596. Pastor Becker was installed as the church's first full time pastor on October 10, 1982.

Coupons for Soldiers

Donate your expired coupons to help support our deployed troops.



There has been some confusion about which coupons are food and which are non-food, (or all other). A newspaper article appeared that is perhaps for another coupon program that operates different from the one in which we participate. After going on line again to verify the information, for our program Vitamins, Aspirin, Cough Remedies, and anything else that you, as a human being don't eat as food, is Non-Food, (or all other). Gum is considered candy and is food according to the Overseas Coupon Program.

A HUGE Thank you to all of you who tally the value of your coupons before bringing them into church. Having done that I know that you realize what a time consuming job that is. Your help makes my job of compiling four bundles of food and four bundles of non-food coupons, for our four adopted bases, go just that much faster. As an aside, if anyone is interested in helping or working with me in this outreach program please let me know. Thank you, Susan Sherman 352-552-6512

Can You Match our Church's Pastors With Their Names?

1



2



3



4



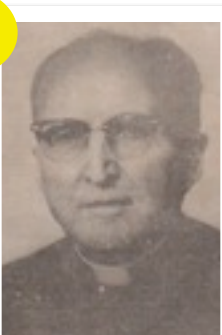
5



6



7



8



- Rev. Thomas A. Shearer
- Rev. Jonathan Ostenburg
- Rev. A.C. Pikop
- Rev. C. Phillip Whitener
- Rev Harold Kildahl
- Rev. Martin Swanson
- Rev. Nancy A. Vogel (Interim)
- Rev. Harry Anderson
- Rev. Carl Moberg
- Rev. Donald Himmelman (Interim)
- Rev. George Becker

We Have a Contest!

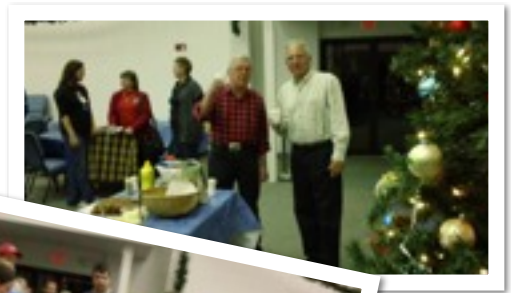
Match the names to the faces of our previous and current pastors and be the first to send to the Church Office and you will win your choice of a Shepherd of the Hills Cookbook or a license plate.

Match the number by the face with the name. *(In case you haven't noticed, we are missing three of the faces).*

Pictures of the Month



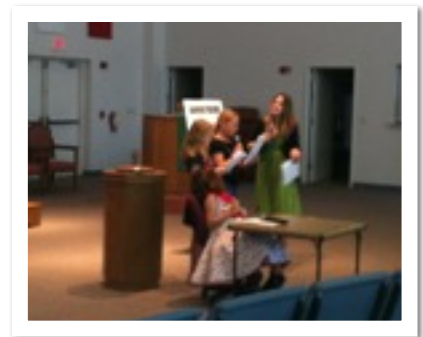
Epiphany Potluck



Luther Springs Camp



**Advertisers 'R Us
Souper Bowl
Commercial**



SHEPHERD OF THE HILLS LUTHERAN CHURCH

the
SHEPHERD'S VOICE



the **SHEPHERD'S VOICE**

Shepherd of the Hills Lutheran Church

13600 Caspian Way
Clermont, Florida 34711

Phone: 352-394-3382

Web: www.shephillsclermont.org

[Click HERE](#) to view the church calendar

